

HIRE TIEH – HIRE The Ideal Emergency Home

Supervisor: Dr A Wojcik

Daban Babaker, Humza Wakeel, Ilyas Morrison, Radhika Srinivasan, Yousef Anis, Zak Anis

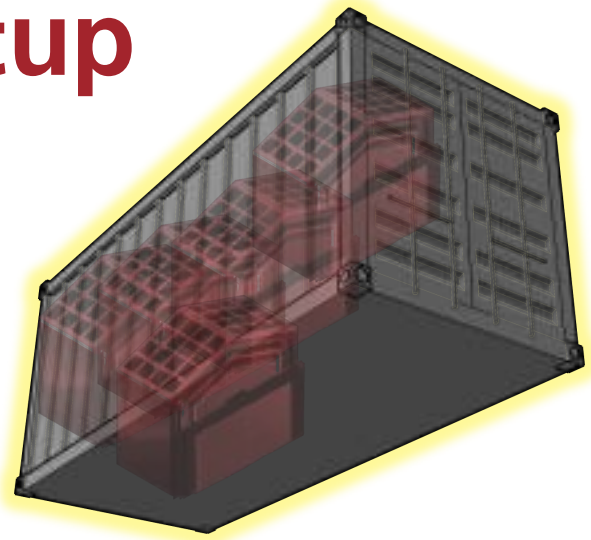


HIRE TIEH - HIRE The Ideal Emergency Home, aim to provide the first **leasable & reusable temporary home** for the considerable part of the

...current **65.3 million** forcibly displaced people **world-wide**.

Our **Innovative, tool-less** and ergonomic design ensures **effective deployment** and setup of the home during an **emergency crisis**.

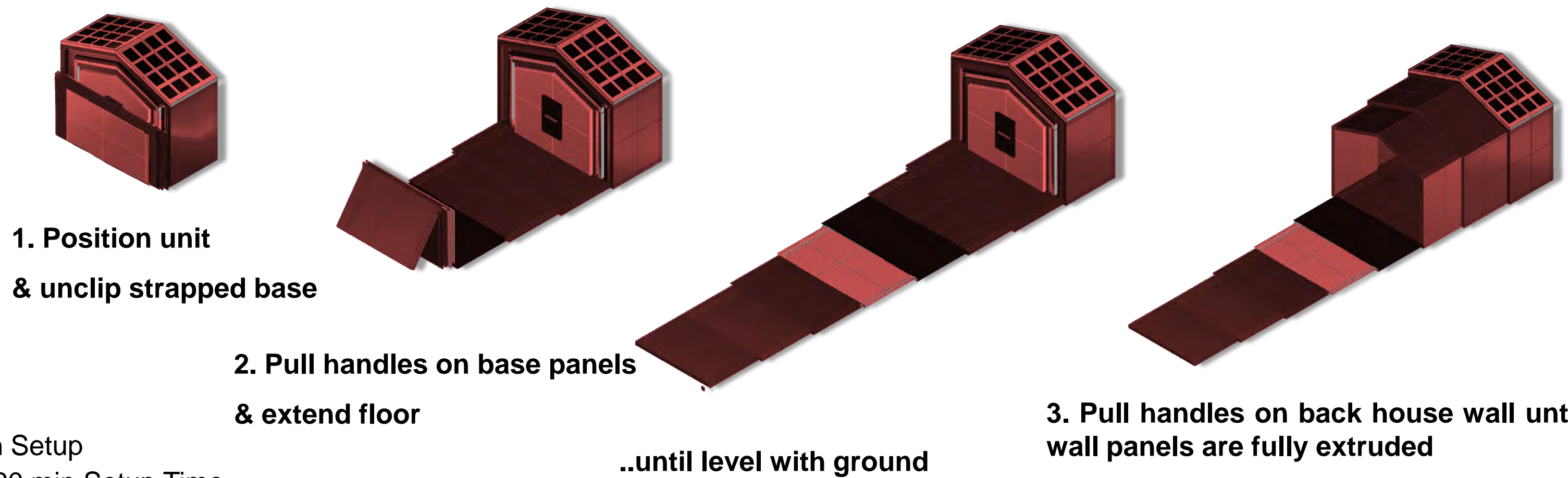
The Setup



8 x shelters fit within a 13.56 x 2.35 x 2.7m shipping container



2 Person Setup
Approx. 20 min Setup Time



1. Position unit & unclip strapped base

2. Pull handles on base panels & extend floor
..until level with ground

3. Pull handles on back house wall until all wall panels are fully extruded

4. Secure all locking pegs at end of each wall panel

The Function

100W Solar Panel

Wiring and Electrical Sockets installed

Windows:

- 5 windows
- Durable Plexiglass panel
- Internal latch lock
- Mosquito net



General Dimensions:

- Average height, 1.8m
- Gusset supports
- Overall floor area, 19.37m²

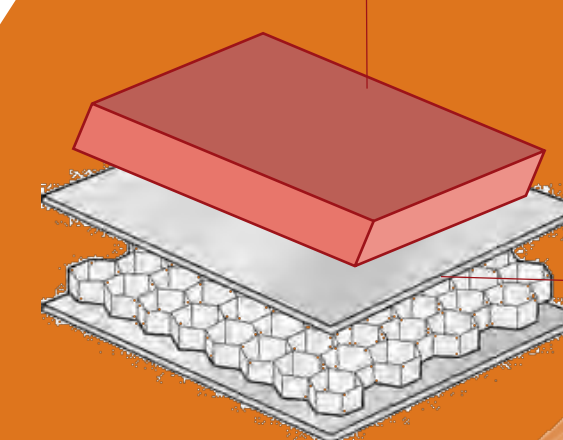
Designed to withstand up to gale force 10 winds

Door/Security:

- Internal and external lock and bolt
- Insulative MDF and PVC Skin

Average thermal resistance:

- Main structure wall, 0.844 m²K/W
- Maintains equilibrium at sub-zero temperatures with provisioned heater and without, at average temp.



Honeycomb panel:

- Plywood facings
- Polypropylene cell core
- Polystyrene foam with finish

Base:

- Top layer finish
- Followed 9mm plywood
- Bottom layer of EPP Base (both with finish coating)
- Effective Insulation method

- Estimated £2700-£3000 raw material costs
- Estimated unit weight, 651kg
- Shelters 5 people

5-8 years expected lifespan

