

# ELECTRIC BAMBOO BICYCLE- FRAME TEAM

PROJECT SUPERVISORS: DR. ERAL BELE, JAMES MARR

LEE LOONG ZHUO, LEE ZONG HAN, TEE YI HAN, VALERIE NGOW YINGLI



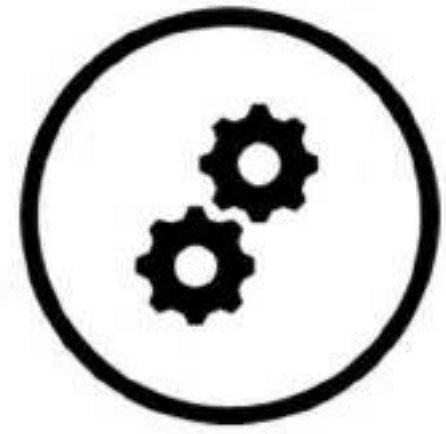
## GO FURTHER WITH BAMBOO!

## CUT OUT SHORT CAR RIDES!



### INTEGRATED BATTERY

36 V, 7Ah; 4-hour recharge  
60km range at top speed



### 7-SPEED GEARING

versatile cruising



### 250 W MOTOR

rear-wheel hub & 15Nm torque



### LIGHTWEIGHT

only 17kg incl. battery system



### SUSTAINABLE

bamboo frame & handlebar  
hemp-fibre/epoxy composite joints



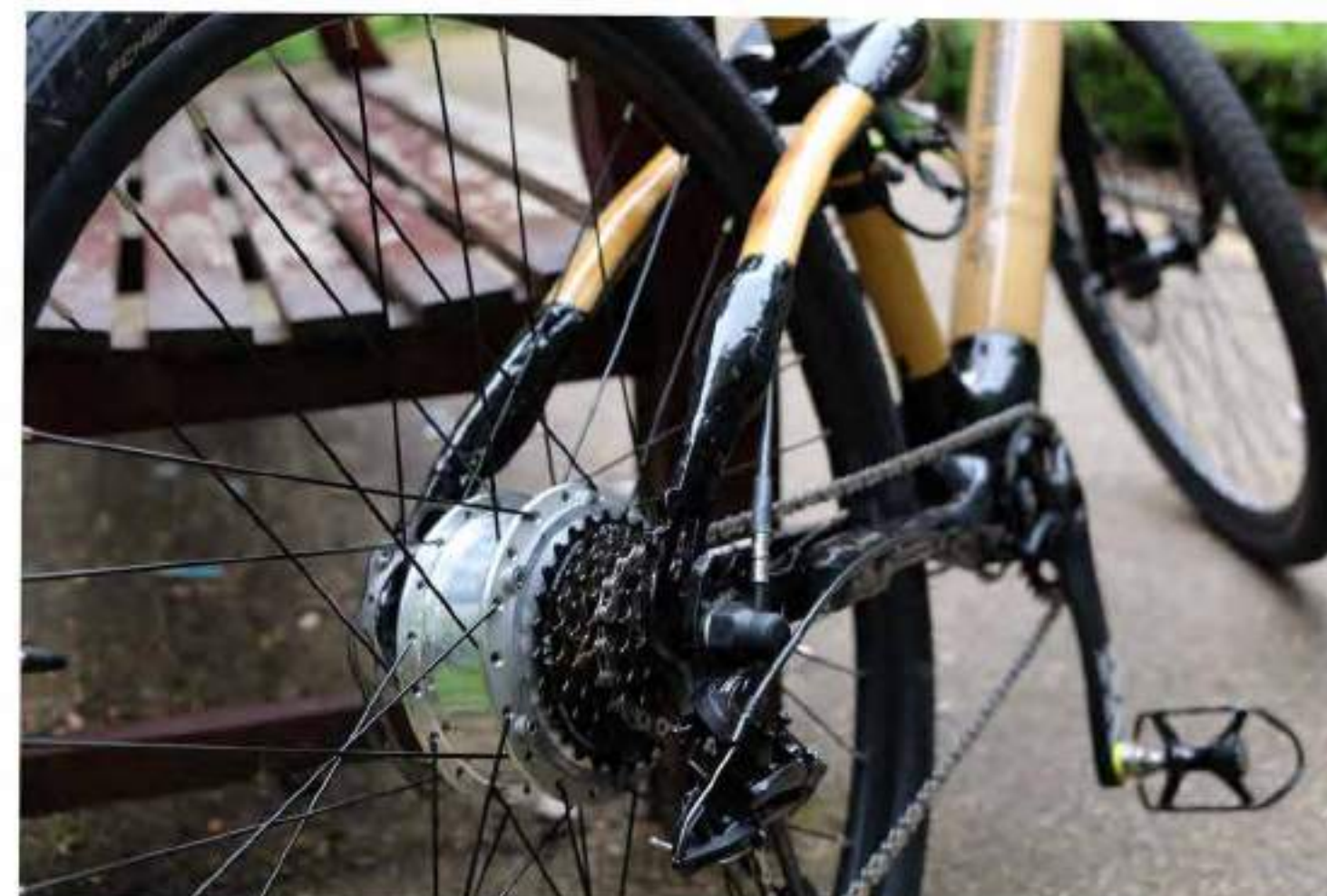
## £2150



BAMBOO HANDLEBAR



REAR-HUB WHEEL MOTOR



### PROBLEM STATEMENT

Existing electric bicycles are heavy, & come with cumbersome batteries. The battery destroys the aesthetics of the bike, & is easy to steal.

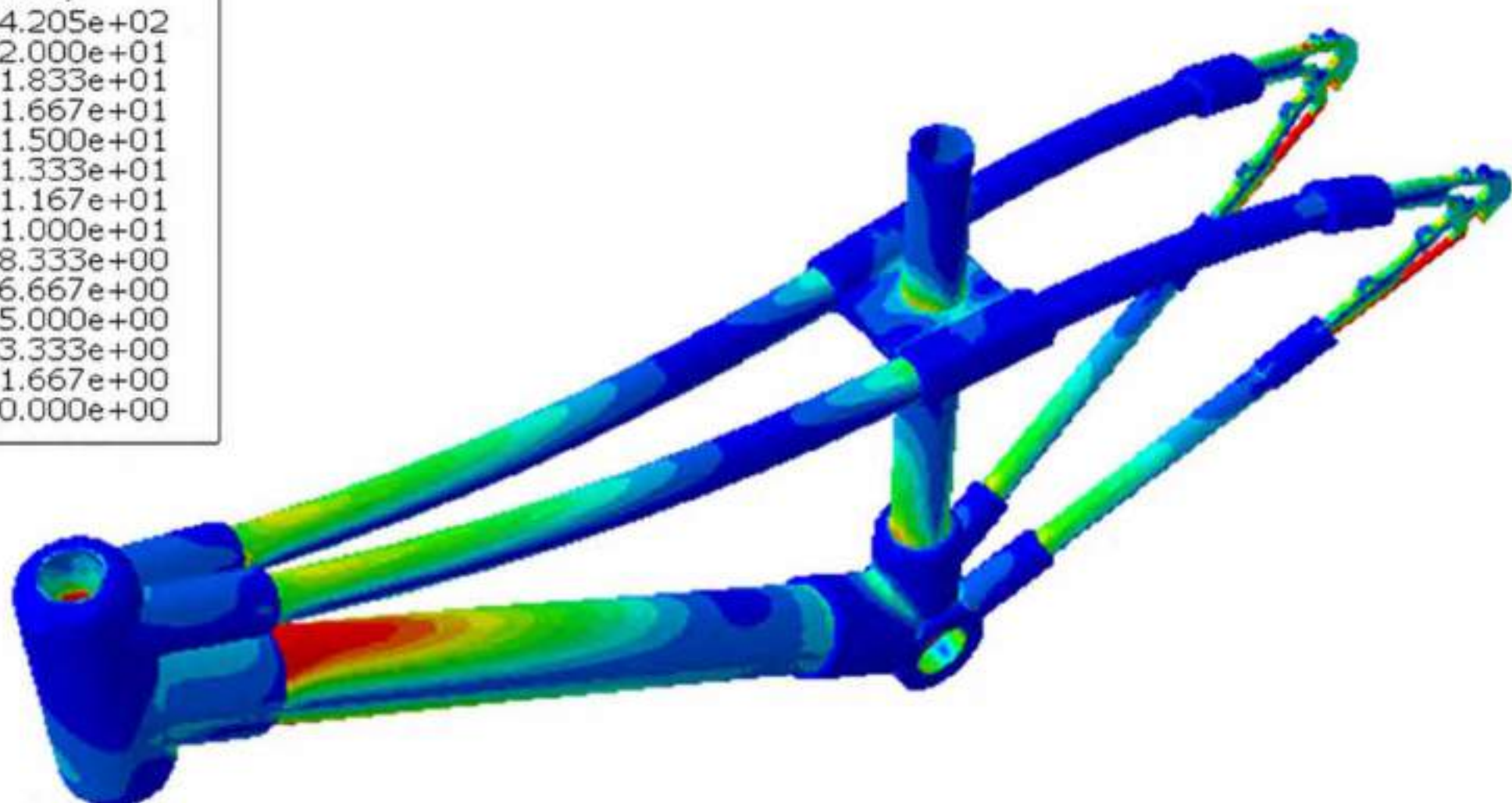
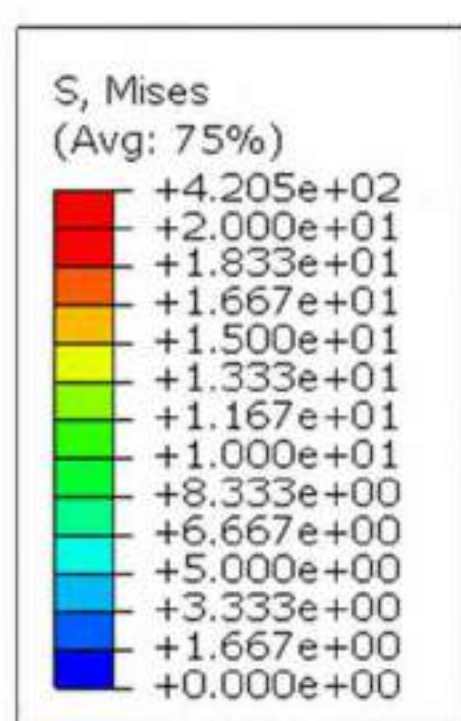
### SOLUTION

We are reducing its weight by using bamboo for its frame. Battery integration for improved aesthetics. Improved frame design for ease of mounting for riders with restricted mobility/movement.

### INTEGRATED BATTERY



### ENGINEERED TO LAST



### OUTREACH



### PARTNER

