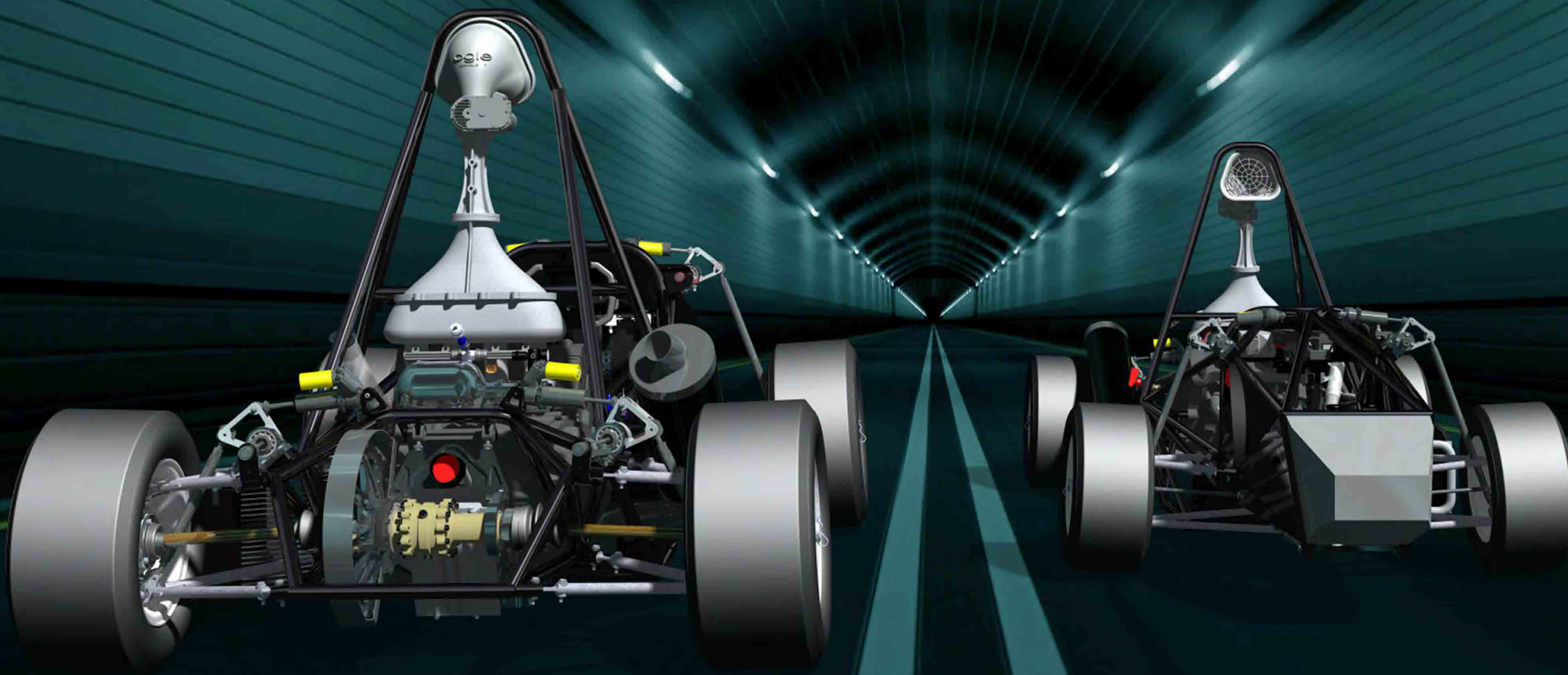
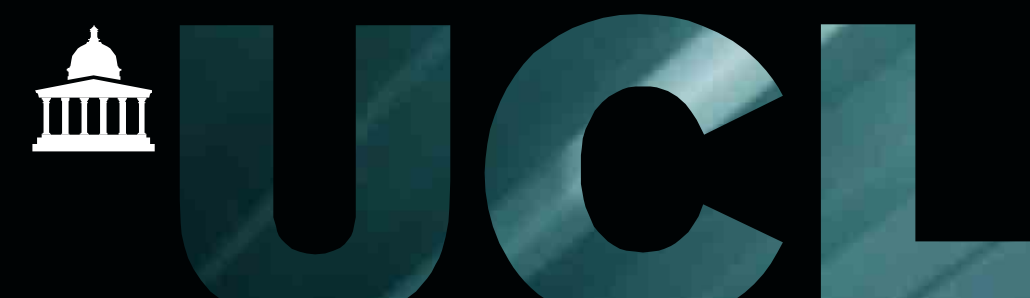


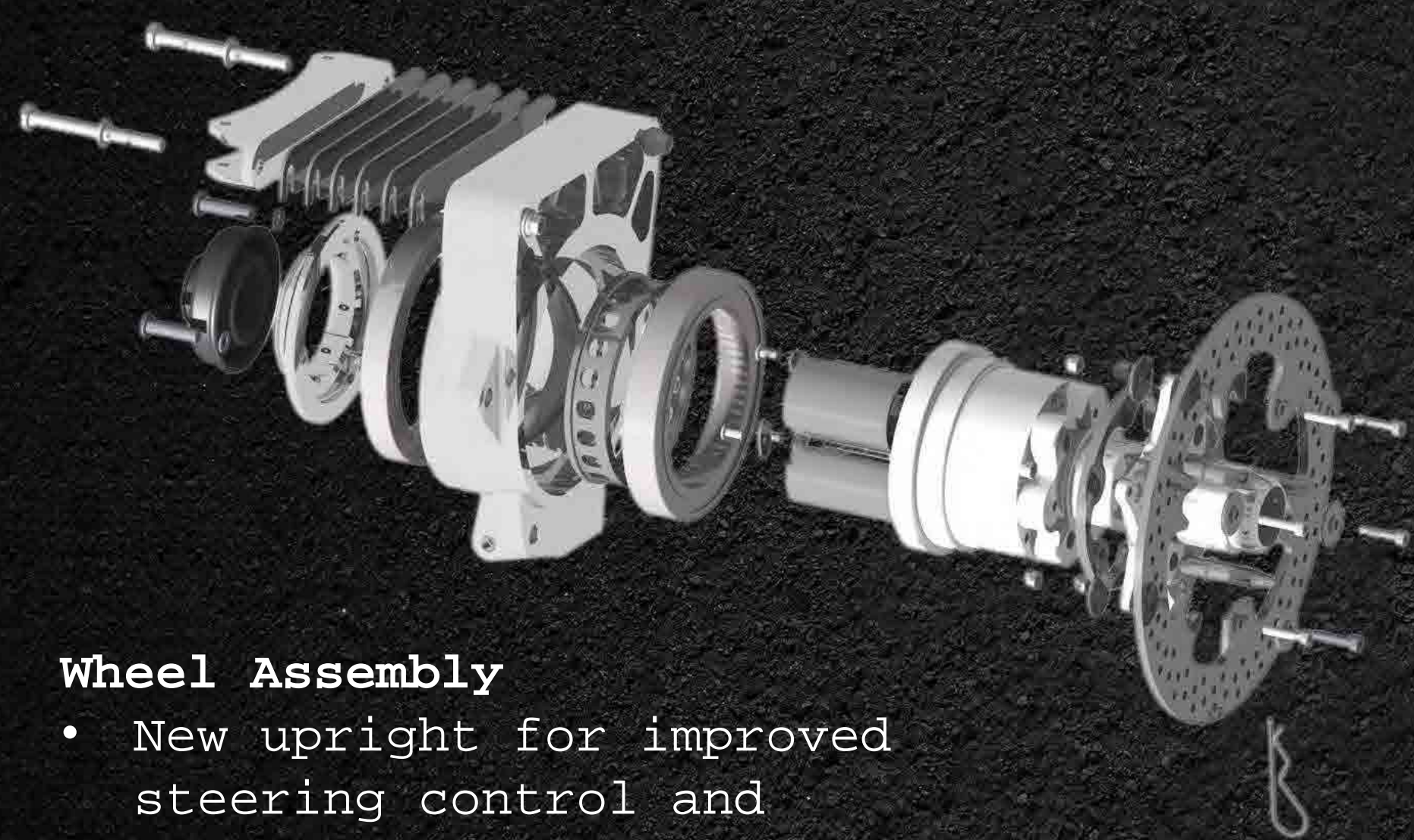
FORMULA STUDENT 2018

J. Buckley, S. Chikte, N. Denisova, K. Hunter, S. Keya, J. Lofts, M. Mansouri,
R. Meghani, A. Miah, D. van Riesen, J. Robinson, G. Sanganee
Supervised by Dr. Baker, Peter Weston

MECHANICAL ENGINEERING



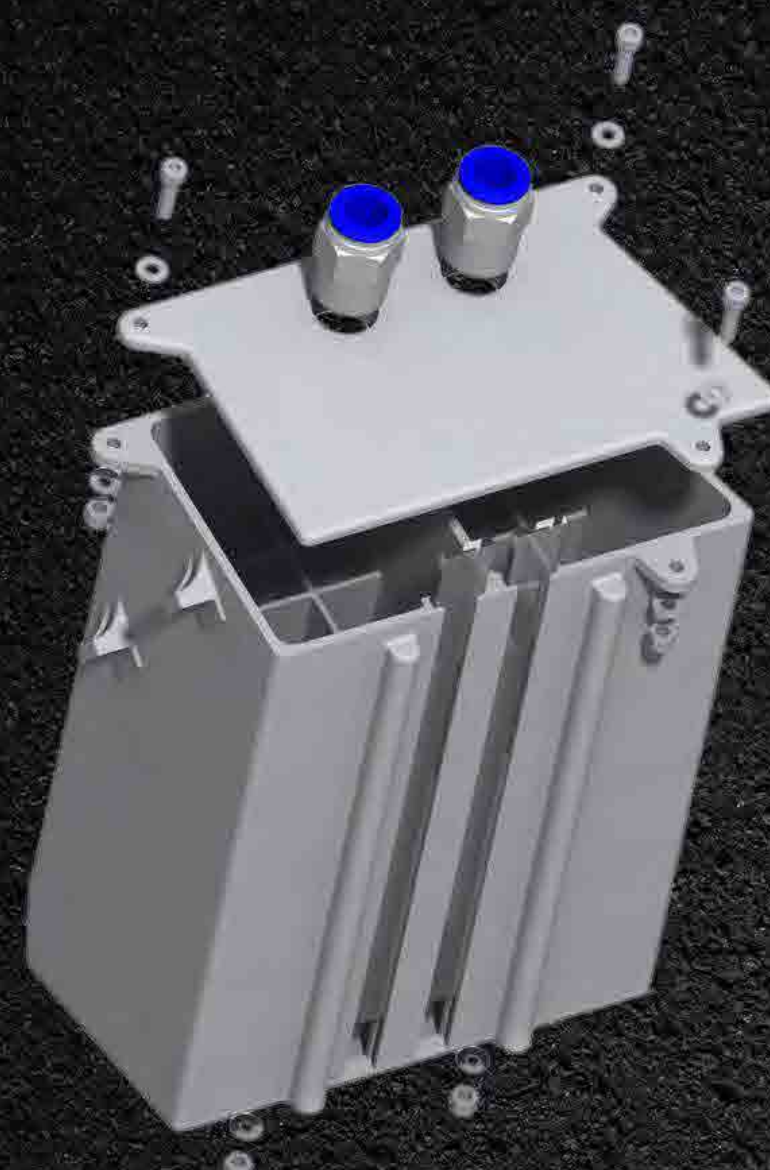
Upright Here, Upright Now



Wheel Assembly

- New upright for improved steering control and handling
- Improved hubs
- Additional wheel speed sensors

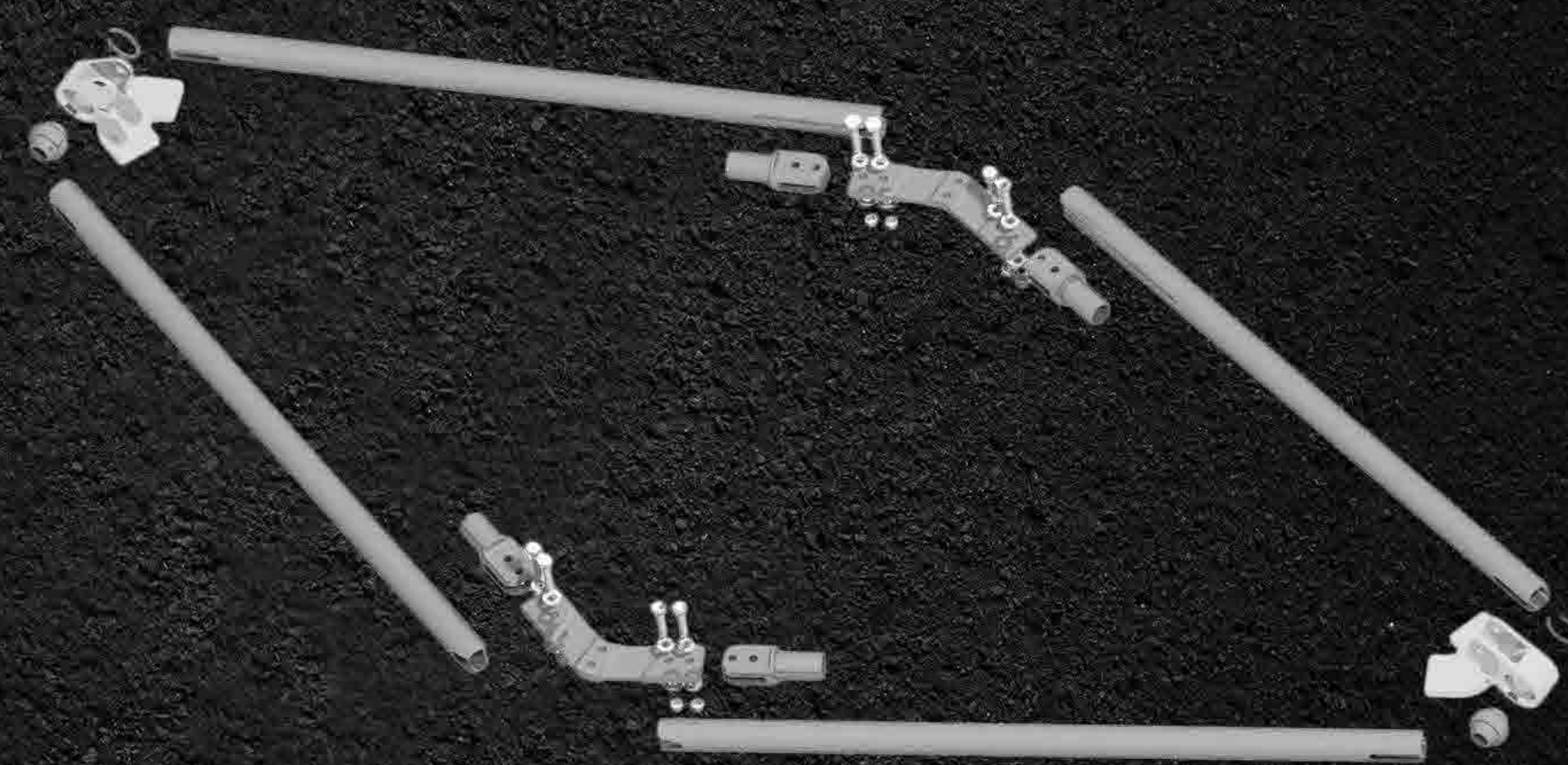
Catchy Stuff



New Catch Tank

- 3-D printed
- Transparent viewing window to judge fluid levels
- Withstands 100° C

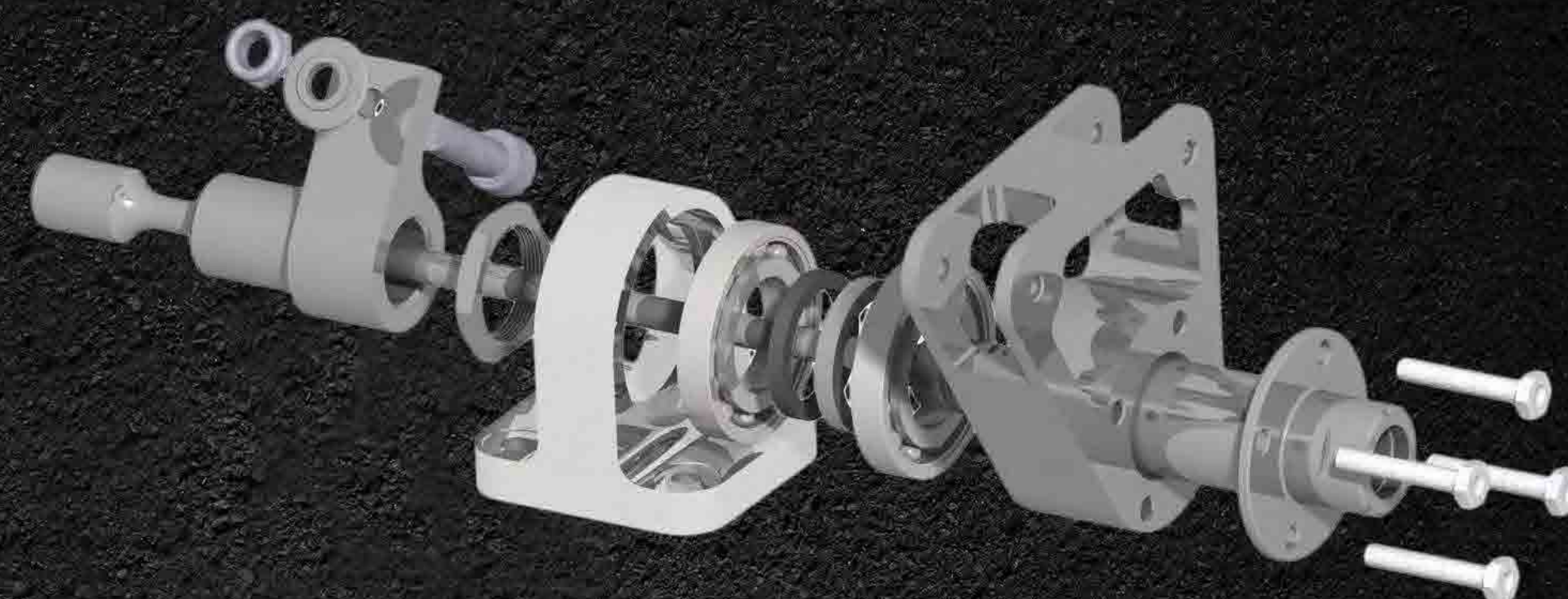
Double A-Grade Designs



Double-A Wishbone Assembly

- Flexures reduce suspension's degrees of freedom
- Lower centre of gravity & roll centre

Rocker 'n' Roll Rate



Rocker and Torsion Bar Assemblies

- Improved Rocker design
- Advanced suspension system incorporating torsion bars
- Lightweight design with material optimisation

